



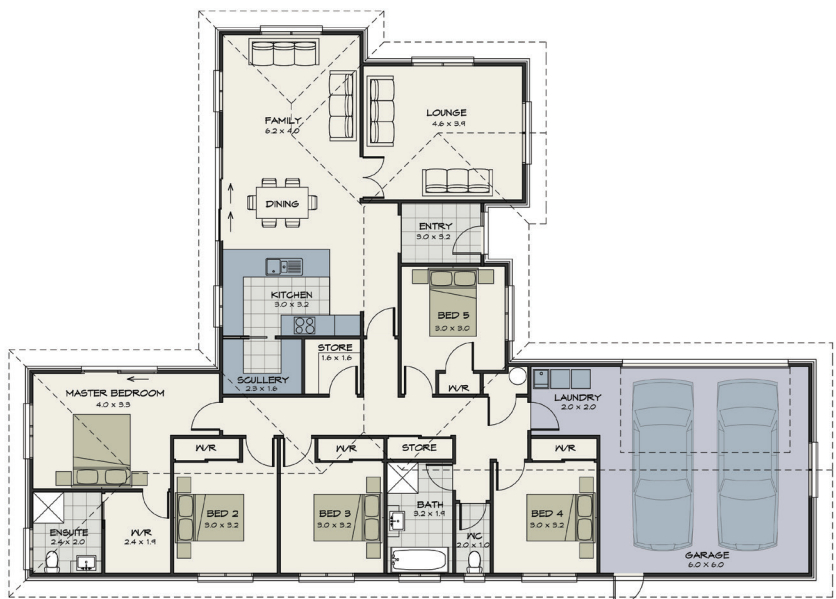
KOWHAI225

Floor area: 225.3m²
(over foundation)

Overall dimensions (approx):
Length: 22.9m Width: 16m

Design specifications*

- Designated entrance
- Five bedrooms
- Double living open plan
- Indoor/outdoor flow
- Kitchen and scullery
- Bathroom and ensuite
- Walk in wardrobe
- Walk in storage
- Double garaging



* Products featured in this illustration may differ from standard inclusions.

KOWHAI225



Standard inclusions:

- Council application fees and consents (excluding resource consent)
- Engineers fees and inspections
- Plans
- Standard 300mm excavation
- Site drainage on a town site - PC Sum allowance (excludes rural drainage)
- Foundations and slab on good flat ground
- Mains power and phone on a town site (excludes rural mains power and phone)
- 2.4m stud height throughout
- Outdoor covered roof area
- Radiata pine wall framing and roof trusses
- Coloured steel roofing
- Continuous coloured steel fascia and spouting
- Brick/Linea exterior cladding- wide range of colours
- Insulation to all external walls and ceilings (excludes garage)
- Gib plaster board throughout to a level 4 paint finish
- Aqualine to wet areas
- Double glazed aluminium joinery
- Coloured steel sectional garage doors with openers (insulated)
- Resene quality paints inside and out
- Windsor interior door hardware
- Nylon carpets throughout
- Melteca cabinetry and laminate tops to kitchen
- Full designer shelving systems to all wardrobes and cupboards
- Pine painted trim - architraves and skirting
- 55mm Gib cove throughout
- Tiled floors in wet areas
- 250 litre smart control hot water cylinder
- Bosch kitchen appliances
- Designer quality bathroom fittings
- LED lighting throughout
- 10-year Master Builders Guarantee
- Full colour consultation
- Commercial clean upon completion
- Full construction and public liability insurance
- Construction schedule supplied with a guaranteed completion date

Plan Flipped



Love this house design? We can customise external cladding, roofing and other features to suit.

© These designs and illustrations remain the property of Urban Homes and may not be used or reproduced in whole or in part without written consent